

The Grapevine



Newsletter of the Finchley Horticultural Society

Spring 2018

Committee News

The Committee are delighted to welcome Chris Ouseley as the new treasurer for the Finchley Horticultural Society. Chris is a plot holder at Gordon Road and has had an allotment there for over 30 years. He also keeps bees.

The FHS Handbook has been completely revised and a copy of it is on the website. Members should have a paper copy - if you don't yet have a copy please pick up it from the Green Room or the Trading Hut on a Sunday morning.

Copies of the NGS booklet advertising London gardens which are open for charity in 2018 are available in the Green Room at Gordon Road.

Perennials are on sale every Sunday morning at Gordon Road.

Annual Plant Sale

Sunday 20th May 2018
10.30am to 1.30pm

Sunday 27th May 2018
10.30am to 1.30pm
Gordon Road Site

flowers - annuals and
perennials

herbs vegetable plants

honey from our own hives

refreshments served from
our new accessible

tea hut
free entry

SPRING TIME

I hope that by the time you are reading this edition of the Grapevine the weather will have improved and we will all have been able to get out into our gardens and allotments and started planting as well as tidying up after the winter.

The 77th AGM of the FHS was held on 20th March. Claudine Fear was re-elected as Chair of the Society, Catherine Schmitt was re-elected as President and members were elected to the General Committee and the Allotment Committee. Claudine outlined the priorities for the Society for the coming year. Her report will soon be on the website.

The next 'Have your say' meeting will be on 22nd April at 11.00. Please come along to the Log Cabin at Gordon Road to meet other plot holders and members of the committees for a chat and some refreshments. Bring a photo of your favourite daffodil to the meeting and Lesley Ludlow will help us to identify which types we love in our gardens.

Please note that Plant Sale dates have changed because of the clash with the date of the Royal Wedding and the FA cup final.

To complement the publishing of the new Handbook the Secretaries of each site are offering all new members an induction to the FHS and their particular allotment site. This means that everyone will be aware of the facilities and social events that are available to them and the very few rules that make for the smooth running of the allotments.



Pests

friend or foe - how do you know?

As Editor, I went to the Barnet Allotment Federation Annual General Meeting last month with other members of the Committee and we were all pleasantly surprised that the business part of the meeting was very short. The talk by Howard Drury was very interesting.

Howard is a horticulturalist, gardener and long time presenter on Central TV and he spoke concerning his thoughts on pest control. He helped us identify creatures that cause problems and discussed how to deal with them, especially in the light of new regulations limiting the availability of garden chemicals.

The overall tenet of his talk was that there needs to be a balance in the food chain and that some foes are therefore necessary. Not all the creatures we consider pests are as bad as we think and we should be careful about which we eliminate.

His rule of thumb concerning pests goes as follows: tickle a bug with something like a cocktail stick then if it runs - let it go and if it curls up - kill it!

Aphids

Otherwise known as blackfly, greenfly and whitefly. Their breeding rate increases as the temperature rises and they suck the sugar out of the plants leaving the plant with a sooty mould so it suffers from lack of light and food. Howard recommended 'Ecofective bug killer' which is organic and not chemical, using pyrethrins & fatty acids.

It contains none of the neonicotinoid chemicals. It also has the benefit of invigorating plants thus deterring pests and disease.

Beetles

Beetles include ladybirds, chafers, weevils and ground beetles. Lily beetles are a particular nuisance for gardeners. They are active from March to October and lay their eggs under the leaves and can destroy a plant in a few days.



Rose Aphids

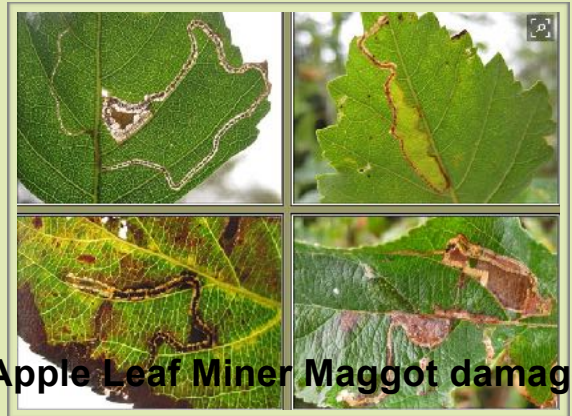


Lily Beetle

A new variety of lily called 'Defender Pink' seems to be unattractive to the lily beetle. Howard also recommended a 'Grazers' product, G4, to protect lilies from infestation. Seven Spot Ladybird larvae eat woolly aphids so, as Howard said, there is a balance to strike. Ground beetles cannot fly and are meat eaters. The Chafer or May Bug lays its eggs in late May and early June in lawns. Howard recommends leaving your grass about two inches long at this time of year and then the Chafers can't get to the soil.

Caterpillars of Butterflies and Moths

Caterpillars, of course, have many ways to destroy our favourite plants - they are stem borers, leaf webbers, leaf eaters. Apple leaf miner moth's maggot-like larvae burrow through



Apple Leaf Miner Maggot damage

the leaf tissue causing distinctive damage. They may be eaten by ants but Howard also recommended Grazers G1, which you spray onto the plant leaves.

Centipedes, millipedes and earwigs

Centipedes eat insects, earthworms, spiders, slugs and other small animals. Generally, they don't eat plant matter. Millipedes are detritivores (animals that consume decomposing

organic material and in doing so contribute to decomposition and the recycling of nutrients). Most millipedes eat decaying leaves and other dead plant matter, moisturising the food with secretions and then scraping it in with the jaws. Earwigs may transmit viruses but are not a serious problem to gardeners.



centipedes rarely eat plants

Pests

friend or foe - how do you know?

Snails and Slugs

There are about 28 to 32 species of slug and about a third of them eat green plants, a third eat dead plant matter and a third are carnivorous. Thus, about two thirds are actually useful to gardeners!

Similarly, there are between 96 and 102 species of snail. The good news for us gardeners is that Howard considers the blue slug pellets containing metaldehyde harmless to wildlife as birds only eat live slugs and snails and there is not enough metaldehyde in the pellets to harm bigger animals.

Howard Drury's website can be found at www.thedrurys.com.

Other news

We have 3 RHS tickets giving 30% discount on entry prices to any RHS garden in 2018. Members may borrow these tickets for a visit and then return them. Treasurer, Chris Ouseley is holding them for the Society.

There will be an FHS visit to RHS Wisley in September, organised by June Brookes. Come along and enjoy a great day out. Further details to be announced.

Bringing a new pond to the wildlife plot by Lesley Ludlow

We would like to put an end to the constant topping up of the old bath by converting it into a bog garden and then installing a beautiful new pond nearby. Of course we'll need some help with the digging! The work is best done while the ground is still soft. So if you have some time in the next month please let us know. Contact June Brookes or Felicity Nock or put your name on the list in the Green Room. And please let us know if you are interested in helping out with the wildlife plot and learning more about the what goes on there. Beginners welcome!

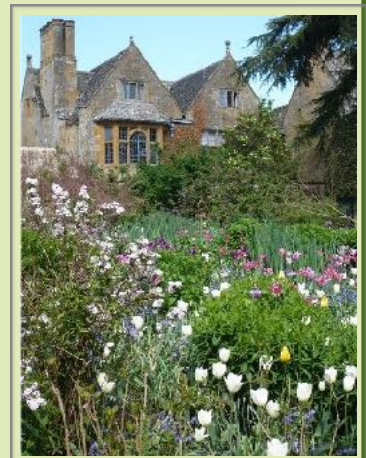
Newsletter

If you received a paper copy of this newsletter and are now able to receive it by e-mail, please inform Christine Williams, chrysw@hotmail.co.uk. This saves us time and money.

FHS Summer visit to HIDCOTE MANOR GARDENS and KIFTSGATE COURT GARDENS

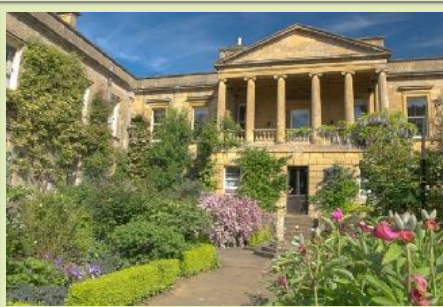
There are seats available for the FHS summer visit to Hidcote and Kiftsgate Gardens, on Sunday June 24th. Tickets cost £28 and £30 for non members, which includes travel on an executive coach and the entry fee to Kiftsgate. There is also a £12 entry fee for Hidcote Manor unless you are a National Trust member. Booking forms are available from Judy Woollett on finchleyhorticulturalsociety@gmail.com or 020 8346 5107.

Hidcote is an Arts and Crafts garden in the Cotswolds, a stone's throw from Stratford-upon-Avon. Created by the talented American horticulturalist, Major Lawrence Johnson, its colourful and intricately designed outdoor rooms are full of surprises. Discover secret gardens, magnificent vistas and plants that burst with colour.



Heather Muir created the garden at Kiftsgate which, up until 1920, had consisted of a paved formal garden in front of the portico with a field and wooded banks beyond. Heather was helped and inspired by

her lifelong friend Lawrence Johnston of Hidcote Manor. From the mid 50s Dian Binny continued to add to the garden and it is now in the hands of Anne Chambers, who



has continued the family tradition seeking out new and interesting plants to complement the colour scheme.

This issue of the Grapevine has been generously sponsored by Winkworth Estate Agents.

T:020 8349 3388

Winkworth

www.winkworth.co.uk

The Finchley Horticultural Society

43 Oakdene Park, Finchley, N3 1EU

www.finchleyhorticulturalsociety.org.uk

twitter.com/finchleyhort

www.facebook.com/FinchleyHS

For all Finchley gardeners and for plot holders at
Gordon Road, Nethercourt Avenue and Brent Way

President

Catherine Schmitt

Chairman and FHS Enquiries

Claudine Fear: 020 8346 0353

Allotments Secretaries

Gordon Road: June Brookes
020 8349 2253

Nethercourt Avenue: Janine Limberg
07535 720691 or

Penny Igoe 07871 846496

Brent Way: Elaine Wright
020 8346 9975

Treasurer

Chris Ouseley: 020 8346 1205

Membership

Christine Williams: 07984 935668

Trading Hut

June Brookes: 020 8349 2253

Website & NGS Liaison

Judy Woollett: 020 8346 5107

Allotments Security & Break-ins

Tony Ingram 020 8349 1265
or 07967 274739

Newsletter Editor

Jo Cuttell 020 8922 0241

**To contact any committee member by email
please use this address:**

finchleyhorticulturalsociety@gmail.com

*Member of the Barnet Federation of Allotment
and Horticultural Societies*

*Affiliated to the
Royal Horticultural Society*



Events Diary

22nd April 2018

Have Your Say

Log Cabin, Gordon Road Allotments
All FHS members welcome



20th and 27th May 2018

FHS Plant Sale

Sunday 20th May from 10.30 am to
1.30pm

Sunday 27th May from 10.30 am to 1.30pm



22nd - 26th May 2018

RHS Chelsea Flower Show

Royal Hospital Chelsea, SW3 4SL

Tuesday - Friday 8.00am until 8.00pm

Saturday 8.00am until 5.30pm

tickets are selling fast



24th June 2018

FHS visit to Hidcote Manor and
Kiftsgate Gardens

£28 or £30 for non-members
near Stratford-upon-Avon



2nd - 8th July 2018

RHS Hampton Court Palace
Flower Show

10.00am until 7.30pm (5.30pm Sunday)



11th - 12th July 2018

RHS Plant and Art Fair

RHS Lindley Hall, SW1P 2QW and

RHS Lawrence Hall, SW1P 2QD

RHS members £5, £8 in advance,
£9 on the day



1st - 5th August 2018

RHS Garden Hyde Hall Flower
Show, Essex



27th August

Bank Holiday Monday 2018

NGS Day



**To book tickets to RHS shows, visit
rhs.org.uk/shows or call 0844 338 7539**

**Members of the RHS get discounts on entry
to the shows**

Finchley Nurseries Garden Centre offers a 10%
discount on plants to all Finchley Horticultural
Society members. It now has a new tea room
which is open from 9.00 to 5.30 on Mondays to
Saturdays and 10.30 to 4.30 on Sundays.

Next Grapevine July 2018